



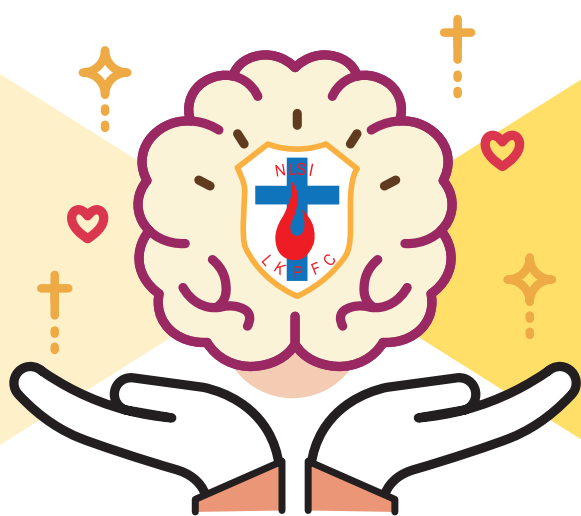
# NLSI Lui Kwok Pat Fong College

## Christian Co-educational Secondary School

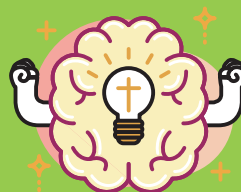
Beloved, let us love one another: for love is of God;  
and every one that loveth is begotten of God,  
and knoweth God.  
(1 John 4:7)



Physical wellness



Motivational mind  
Flourishing life  
Constructive vibe



Positive thinking



Vibrant learning  
environment



Life experience



Spiritual wellness



Life planning



Mental wellness



Healthy lifestyle



Carbon-neutral lifestyle

School Profile 2024-2025



陶造生命五五載  
碧澤呂中耀主恩

# School Introduction

## School Missions

Based on the teaching of the Bible, we are committed to imparting knowledge and cultivating good behaviours among students. We aspire to instill proper values in students by educating them about the truth in the Bible and building their belief in God as the Master of their lives. We endeavour to empower our students to be well-rounded, righteous and responsible citizens with godly character.

## School Motto

Jesus Christ is the Master of New Life

## School Sponsoring Body

New Life Schools Incorporation Ltd.

## Type

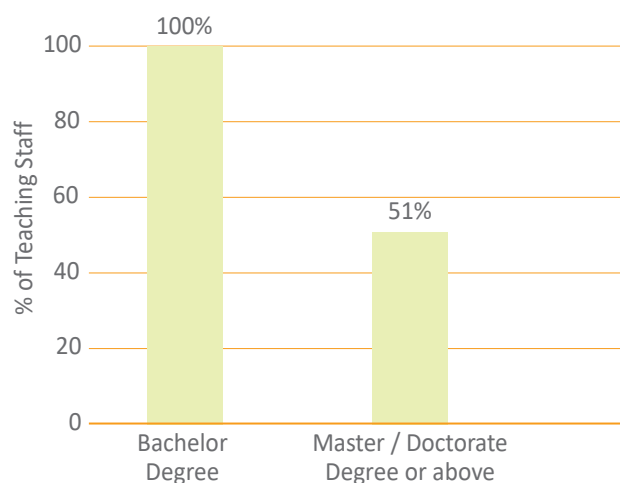
Subsidized Christian Co-educational Secondary School

## Area

7,900 square meters

## Qualifications of Teachers

(including the principal)



## School History

Founded in 1969 on Hong Kong Island, the original name of the school was New Life School. Thanks to the donation of the Lui Ming Choi Foundation, the school was relocated to its current campus in 1985 and was renamed NLSI Lui Kwok Pat Fong College.

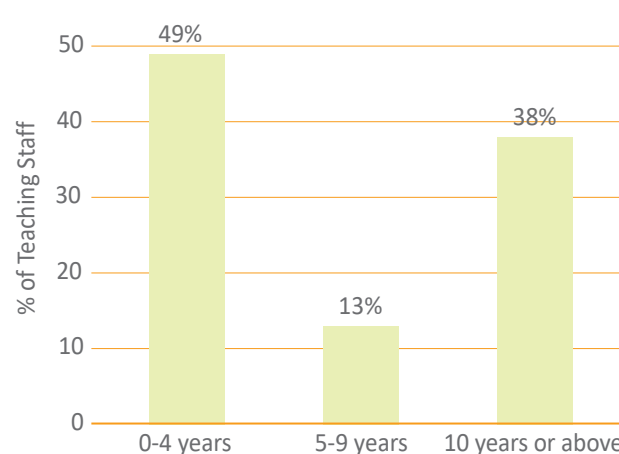


School Supervisor and  
Chairperson of IMC  
**Mr. LEUNG Yiu Kuen**



Principal  
**Mr. CHEUNG Fung**

## Experience of Teachers



# School Features

## We practise teaching based on Christian principles.

We aim to enrich our vibrant learning community by enhancing students' motivation, fostering self-directed learning for self-improvement, consolidating knowledge to integrate skills across the curriculum, and strengthening generic skills through the showcase of their learning outcomes.

We aim to enhance students' spiritual, physical, mental, and social wellness by cultivating their spiritual temperament, promoting healthy lifestyles, nurturing positive thinking, and fostering unity and benevolence to empower them to serve the school, society, and country.



- Student Christian Fellowship meetings are held regularly. A variety of activities are organised to share the Christian faith and build up mutual support.
- Spiritual Affairs Committee and Religious Studies Panel collaborate to provide an inspirational programme on various life scenarios to facilitate students' understanding of the Gospel.
- The executive officers of Student Christian Fellowship and Ambassadors of Care organize thanksgiving activities on the campus and serve the community with care and love.



## Life Planning Education

### Equip ourselves and explore pathways

- Career Live, a social simulation game and career planning programme, is organised for junior form students. It aims to help students reflect on their characters and abilities so as to understand their own strengths and weaknesses to prepare them for further studies, for work as well as for life-long learning.
- School-based life-planning lessons for S1-4 are conducted to help students understand themselves and the world of work, as well as university programmes and different study pathways.
- The Education Bureau has invited our school to share our outstanding results in Applied Learning with schools in Hong Kong. In addition, the press has interviewed our school on how Applied Learning is introduced and carried out in our school.
- To broaden students' horizons and inspire them to pursue their dreams, overseas study tours are held to let students visit various universities and understand local industries.



# Language Policy

We strive to enhance students' language competency so that they can be well-equipped to continue their learning in higher and further education.

## 1. Fostering a habit of using English for life-long and self-directed learning and catering for learning diversity

- to conduct Language across Curriculum (LaC) programmes through the collaboration between the English Department and departments of different content subjects with various learning experiences outside classroom so as to facilitate their learning of other content subjects in English
- to identify and support gifted students in the school by participating in the Gifted Education School Network by the Education Bureau



## 2. Enhancing the interface between primary and secondary levels and boosting students' confidence in using English

- to organize various English content activities like S1 English drama training and Competition, English Debating club and Toastmasters Club, etc, to provide an English-immersive environment
- to recruit and train junior form student emcees and announcers for all ceremonies, assemblies and roll-calls
- to organize English Weeks and collaborate with various tertiary institutions to further motivate students to learn
- to provide S1 Bridging Course to strengthen their English foundation



# Subjects Offered in the 2025/2026 School Year

Key Learning Areas	Subjects	S1 to S3		S4 to S6
		3EMI Classes	1 less EMI Class	
Chinese Language Education 中國語文教育	Chinese Language 中國語文	C	C	C
	Chinese Literature 中國文學			C
	Putonghua 普通話	P	P	
English Language Education 英國語文教育	English Language 英國語文	E	E	E
	Language Across Curriculum 跨學科英語教育	E	E	
Mathematics Education 數學教育	Mathematics 數學	E	C*E	E
	M1 數學延伸部份 (單元一)			E
	M2 數學延伸部份 (單元二)			E
Science Education 科學教育	Physics 物理			E
	Chemistry 化學			E
	Biology 生物			E
	Science 科學	E (S1-S2)	E (S1-S2)	
	Science 科學 (Physics, Chemistry, Biology 物理、化學、生物)	E (S3)	E (S3)	
Technology Education 科技教育	Information and Communication Technology 資訊及通訊科技			E
	Business, Accounting and Financial Studies 企業、會計與財務概覽			E
	Computer Literacy 電腦認知	E	C	
	Home Economics 家政	E (S1-S2)	C (S1-S2)	
	Business Fundamentals 基本商業	E (S3)	C*E (S3)	
Personal, Social & Humanities Education 個人、社會及人文教育	Religious Education (Christianity) 宗教 (基督教)	C	C	C
	Geography 地理	E	E	E
	History 歷史	E	C*E	E
	Chinese History 中國歷史	C	C	C
	Economics 經濟			E
	Ethics and Religious Studies 倫理與宗教			C
	Citizenship, Economics and Society 公民、經濟與社會	E	C	
	Life Education 生命教育	C	C	C (S4-S5)
Arts Education 藝術教育	Music 音樂	E	C	
	Visual Arts 視覺藝術	E	C	C
	Aesthetic Development 藝術發展			C (S4-S5)
Physical Education 體育	Physical Education 體育	C	C	C
Cross-Key Learning Area 跨學習領域	Citizenship and Social Development 公民與社會發展科			C

## Remarks:

- C - Chinese Medium of Instruction 以母語教學
- C\*E - Chinese Medium of Instruction with English Extended Learning Activities  
以母語教學，並加入英語延展學習活動
- E - English Medium of Instruction 以英語教學
- P - Putonghua Medium of Instruction 以普通話教學



# Congratulations to our S6 Graduates!



Thank God for the remarkable results in 2024 HKDSE. The hard work of students and teachers are highly appreciated!

As the Bible says, "But one thing I do: forgetting what lies behind and straining forward to what lies ahead, I press on toward the goal for the prize of the upward call of God in Christ Jesus." (Philippians 3:13b - 14) Our students are motivated to persevere when facing every challenge throughout their studies in LKPFC. It is with deep sincerity that we give thanks to God for all their effort is paid off and they are going to embark on a new journey to pursue further studies in various professional fields in future. Highlights of the DSE results are as follow:

The percentages of students attaining 332A+2 or above and 22222/22A22 or above were well above the respective territory averages. Notably, the percentage of students who met the general entrance requirements of the four core subjects for local undergraduate degree programmes is the highest in the recent 5 years. Moreover, 100% of students passed both Chinese Language and English Language. The percentages of students achieving a level of 3 or above in Chinese Language and English Language are both over 80%.

Besides, the percentages of level 5\*\* awarded in 8 subjects, including Biology, Chemistry, Chinese History, Economics, English Language, History, Information and Communication Technology, Mathematics Extended Part Module 2 were above/meet the territory averages.

For more information, please visit our website:



## Graduates' Best Offers 2024

Offer	No. of students	Percentage
Bachelor's Degree	81	68.6%
Sub-degree Programmes	30	25.4%
Diploma/Others	7	6.0%
Total	118	100%

## Further Studies Pathways 2024

Fields / Professions	Categories	
Medical & Social Care	Medicine, Chinese Medicine, Physiotherapy	28
	Nursing, Pharmacy, Biomedical Science	
	Social Work, Education, Counselling	
Humanities	Language, Translation	20
	Legal Studies	
	Social Science, Psychology, Philosophy	
Business & Management	Business Administration	25
	Accounting and Finance, Management	
	Economics	
Technology, AI & Innovation	Civil Engineering, Building Engineering	30
	Computing and AI	
	Creative Media and Design	
Research	Actuarial Science	11
	Data Analytics, Surveying	
	Science	
Others		4
Total		118

